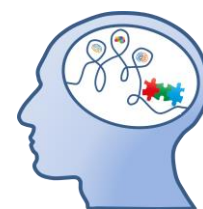


On the celebration of Russian Science Day on February 8

**INTERNATIONAL CONFERENCE
"SOCIAL BRAIN - FOCUS ON EMOTIONS"**



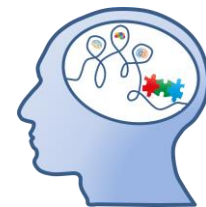
February 8-9, 2022

Professor V.F. Voino-Yasenetsky Krasnoyarsk State Medical University

Program, Day 1, February 8

Time, Krasnoyarsk	Local time for speakers	Presentations
Moderators: Olga Lopatina: ol.lopatina@gmail.com , +79135196622		
8:20	-	Pavel Shesternya, vice-rector for science , Krasnoyarsk State Medical University, Russian Federation Welcome speech
8:30	-	Yana Gorina , Krasnoyarsk State Medical University, Russian Federation <i>Insulin resistance as a pathogenetic factor in the development of social and cognitive impairments in Alzheimer's disease.</i>
9:00	11:00 time in Japan	Hiroshi Kawasaki , Kanazawa University, Japan <i>The mechanisms underlying the development and evolution of the cerebral cortex.</i>
9:30	11:30 time in Japan -	Chiharu Tsuji , Kanazawa University, Japan <i>The deficit of emotional connection in the early life of valproic acid-induced autism model mice is modulated by oxytocin administration</i>
10:00	21:00 (February, 07) time in Chicago	Joanna Dabrowska, Rosalind Franklin University of Medicine and Science, USA The title of presentation is under conformation
10:30	12:30 time in Yakutia	Olga Kolosova, E.Z. Zasimova, I.V. Sleptsov, S.M. Rozhina , Institute of Biological Problems of Cryolithozone, Russian Federation <i>Relationship between anxiety level and metabolomic profile of human blood serum.</i>
11:00	13:00 time in Japan	Yasuhiko Yamamoto , Kanazawa University, Japan <i>Oxytocin, RAGE and maternal bonding.</i>
11:30	13:30 time in Yakutia	Olga Kolosova, E.A. Belchusova., E.N. Nikolaeva . Institute of Biological Problems of Cryolithozone, Russian Federation <i>Age features of psycho-emotional stress of the indigenous inhabitants of the Arctic.</i>
12:00	-	Olga Lopatina , Krasnoyarsk State Medical University, Russian Federation <i>Social behavior and interaction.</i>
12:30	-	Ekaterina Epova , Krasnoyarsk State Academy of Arts, Russian Federation <i>Application of some kinesiology methods in teaching wind instruments". Shown on saxophone.</i>
13:00-14:00	COFFEE BREAK	
Moderators: Olga Lopatina: ol.lopatina@gmail.com , +79135196622 Angelina Mosyagina: angelina.mosiagina@gmail.com , +79135667354		
14:00	10:00 time in S. Petersburg	Anastasia Mikhrina , Sechenov Institute of Evolutionary Physiology and Biochemistry, Russian Federation <i>The role of the melanocortin system in the regulation of the functional activity of dopamine and norepinephrine neurons in the brain.</i>
14:30	9:30	Gil Levkowitz , The Weizmann Institute of Science, Israel

	time in Israel	<i>Developmental acquisition of sociality using the zebrafish model.</i>
15:00	17:00 time in Japan	Haruhiro Higashida , Kanazawa University, Japan <i>Oxytocin dynamics in the body and brain regulated by the receptor for advanced glycation end-products, CD38, CD157, and nicotinamide riboside.</i>
15:30	9:30 time in Italy	Stefano Gaburro , Tecniplast, Italy. <i>Home cage monitoring: advancing social and individual subject-based neuroscience studies via digital ventilated cages.</i>
16:00	12:00 time in Moscow	Alla Salmina , Research Center of Neurology (Moscow), Krasnoyarsk State Medical University, Russian Federation <i>Aberrant social behavior in neurodegeneration.</i>
16:30	12:30 time in S. Petersburg	Elene Mikhailova , Sechenov Institute of Evolutionary Physiology and Biochemistry, Russian federation <i>Molecular pathways of regulation of serotonergic neurons in the brain of mice with metabolic syndrome of various etiologies.</i>
17:00		Discussion and Closing remarks



**INTERNATIONAL CONFERENCE
"SOCIAL BRAIN - FOCUS ON EMOTIONS"**

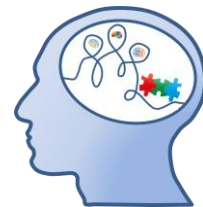
**February 8-9, 2022
Professor V.F. Voino-Yasenetsky Krasnoyarsk State Medical University**

Program, Day 2, February 9

Time, Krasnoyarsk	Local time for speakers	Presentations
Moderators: Elena Pozhilenkova: mct@krasgmu.ru , +79082215126		
9:00	-	Yulia Komleva , Krasnoyarsk State Medical University, Russian Federation <i>Where emotions are born: how emotional intelligence is formed.</i>
9:20	-	Elena Pozhilenkova, Olga Lopatina , Krasnoyarsk State Medical University, Russian Federation <i>Effects of toxic substances on emotional behavior.</i>
9:40	-	Natalia Makhukha , Siberian Federal University, Russian Federation <i>Cognitive biases in decision making.</i>
10:10	-	Yulia Panina , Krasnoyarsk State Medical University, Russian Federation <i>Social interaction and anxiety: the role of olfactory stimulation.</i>
10:40	-	Natalia Yakovleva , Krasnoyarsk State Pedagogical University, Russian Federation <i>Experience of psychological trauma as a source of value self-determination.</i>
11:00	-	Olga Shik , Krasnoyarsk State Medical University, Russian Federation <i>Behavioral strategies of medical students in stressful situations.</i>
11:20	-	Elena Mozheiko , Krasnoyarsk State Medical University, Russian Federation <i>The success of medical rehabilitation of neurological and somatic patients - the significance of the correction of emotional and volitional disorders.</i>
11:40	-	Lyudmila Stepanova , Siberian Federal University, Russian Federation <i>Saliva is an indicator of the state of fatigue of the body during mental and physical stress.</i>
12:00	-	Yulia Pichugina , Krasnoyarsk State Medical University, Russian Federation <i>The basic level of oxytocin in children's patients suffering from autism spectrum disorders.</i>
12:30	-	Marina Smolnikova , Research Institute Medical Problems of the North, Russian Federation <i>Pathogenetics of Internet addiction in adolescents.</i>
13:00-14:00	COFFEE BREAK	
Moderators: Elena Pozhilenkova: mct@krasgmu.ru , +79082215126		
14:00	-	Irina Loginova , Krasnoyarsk State Medical University, Russian Federation <i>Features of psychological well-being in conditions of social isolation</i>
14:20	10:20 time in Moscow	Alla Salmina , Research Center of Neurology (Moscow), Krasnoyarsk State Medical University, Krasnoyarsk, Russian Federation <i>Neurochemistry of decision making.</i>
14:50	9:50 time in Italy	Francesco Papaleo , Istituto Italiano di Tecnologia, Genova, Italy <i>Neural Circuits of emotion discrimination.</i>
15:20	11:20 time in S. Petersburg	Larisa Mararitsa , High School of Economics University, Russian Federation <i>Oxytocin and psychological well-being: research questions and result.</i>

15:50	9:50 Time in Italy	Matteo Gaglione , Ugo Basile, Italy <i>From Animal Behavioural Studies to Social Behaviour</i>
16:20	-	Yury Gerbek , A.A. Malyavko, D.V. Shepeleva. ICG SB RAS, Russia <i>Effect of oxytocin on the behavior of historically and experimentally domesticated animals.</i>
16:40	-	Yury Belokopitov, Galina Panasenko , , Siberian Federal University, Russian Federation <i>Features of the phenomenon of professional burnout.</i>
17:00	-	Maria Kholodova , Krasnoyarsk State Academy of Arts, Russian Federation <i>Russian da Vinci: V.F. Voyno-Yasenetsky.</i>
17:20	-	Yulia Ovechko , Siberian Coaching Center, Global Coaching International University, Russian Federation <i>Behavior and speech as symptoms of an emotional state. Management and training.</i>
17:40	-	Discussion and Closing remarks

ORGANIZING COMMITTEE



Pavel Shesternya: sci-prorector@krasgmu.ru

Elena Pozhilenkova: mct@krasgmu.ru , +79082215126

Olga Lopatina: ol.lopatina@gmail.com, +79135196622

Angelina Mosyagina: angelina.mosiagina@gmail.com, +79135667354

SPEAKER INFORMATION

Belokopitov Yurii, PhD, Professor, Dept. of Theory and Methods of Social Work, Siberian Federal University, Krasnoyarsk, Russian Federation

Dabrowska Joanna, PhD, PharmD, Associate Professor Center for the Neurobiology of Stress Resilience and Psychiatric Disorders Department of Cellular and Molecular Pharmacology The Chicago Medical School Rosalind Franklin University of Medicine and Science, North Chicago, USA

Epova Ekaterina, PhD, Associate Professor, Dept. of Orchestral Wind and Percussion Instruments Dmitri Hvorostovsky Krasnoyarsk State Academy of Arts, Krasnoyarsk, Russian Federation

Gaburro Stefano, PhD, Global Scientific Director, Tecniplast S.p.A., Buguggiate, Italy.

Gaglione Matteo, Marketing Specialist, Ugo Basile, Italy

Gerbek Yury, Ph.D., Senior Researcher, Head of the Laboratory of Neurobiological Foundations of Domestication, Institute of Cytology and Genetics, Siberian Branch of the Russian Academy of Sciences, Novosibirsk

Gorina Yana, PhD, Associate Professor, Department of Biochemistry, Research Institute of Molecular Medicine and Pathobiochemistry, Prof. V.F. Voino-Yasenetsky Krasnoyarsk State Medical University, Krasnoyarsk, Russian Federation

Higashida Haruhiro, MD, PhD, Professor, Department of Basic Research on Social Recognition and Memory, Research Center for Child Mental Development, Kanazawa University, Kanazawa, Japan; Laboratory of Social Brain Study, Research Institute of Molecular Medicine and Pathobiochemistry, Prof. V.F. Voino-Yasenetsky Krasnoyarsk State Medical University, Krasnoyarsk, Russian Federation

Kawasaki Hiroshi, MD, PhD, Professor, Department of Medical Neuroscience Graduate School of Medical Sciences, Kanazawa University, Kanazawa, Japan

Loginova Irina, PhD, Professor, Department of Clinical Psychology and Psychotherapy, Prof. V.F. Voino-Yasenetsky Krasnoyarsk State Medical University, Krasnoyarsk, Russian Federation

Lopatina Olga, PhD, Professor Department of Biochemistry, Head of Russian-Japan Laboratory of Social Brain Study, Research Institute of Molecular Medicine and Pathobiochemistry, Leading Scientist Shared Core Facilities Molecular and Cell Technologies, Prof. V.F. Voino-Yasenetsky Krasnoyarsk State Medical University, Prof. V.F. Voino-Yasenetsky Krasnoyarsk State Medical University, Krasnoyarsk, Russian Federation

Levkowitz Gil, PhD, Professor, Departments of Molecular Cell Biology and Molecular Neuroscience The Weizmann Institute of Science, Rehovot, Israel

Kholodova Maria, PhD, Associate Professor, Department of Music History Dmitri Hvorostovsky Krasnoyarsk State Academy of Arts, Russian Federation

Kolosova Olga, PhD, Professor, Dept. of Ecological and Medical Biochemistry, Biotechnology, Institute of Biological Problems of Cryolithozone FRC YSC SB RAS, Krasnoyarsk, Russian Federation

Komleva Yulia, PhD, Associate Professor, Dept. of Biochemistry, Research Institute of Molecular Medicine and Pathobiochemistry, Prof. V.F. Voino-Yasenetsky Krasnoyarsk State Medical University, Krasnoyarsk, Russian Federation

Makhukha Natalia, Senior Lecturer, Dept. of International and Management Economics, Siberian Federal University, Krasnoyarsk, Russian Federation

Mararitsa Larisa, PhD, Senior Researcher, Laboratory for Social and Cognitive Informatics, High School of Economics University, S. Petersburg, Russian Federation

Mikhailova Elene, PhD, Senior researcher, Dept. of Integrative Neuroendocrinology, Sechenov Institute of Evolutionary Physiology and Biochemistry RAS, S. Petersburg, Russian Federation

Mikhrina Anastasia, PhD, Senior researcher, Department of integrative neuroendocrinology, Sechenov Institute of Evolutionary Physiology and Biochemistry RAS, S. Petersburg, Russian Federation

Mozheiko Elena, MD, PhD, Associate Professor, Dept. Of Physical and Rehabilitation Medicine, Prof. V.F. Voino-Yasenetsky Krasnoyarsk State Medical University, Krasnoyarsk, Russian Federation

Ovechko Yulia, coach, mentor, ICF member co-founder of Siberian Coaching Center, Coach at Global Coaching International University, Krasnoyarsk, Russian Federation

Panasenko Galina, PhD, Associate Professor, Dept. of Theory and Methods of Social Work, Siberian Federal University, Krasnoyarsk, Russian Federation

Papaleo Francesco, PhD, Tenured senior researcher and group leader, Genetics of cognition laboratory (GeCo), Neuroscience Area, Istituto Italiano di Tecnologia, Genova, Italy

Panina Yulia, MD, PhD, Associate Professor, Research Institute of Molecular Medicine and Pathobiochemistry, Prof. V.F. Voino-Yasenetsky Krasnoyarsk State Medical University, Krasnoyarsk, Russian Federation

Pichugina Yulia, MD, PhD, Associate Professor, Department of Psychiatry and Narcology, Prof. V.F. Voino-Yasenetsky Krasnoyarsk State Medical University, Krasnoyarsk, Russian Federation

Pozhilenkova Elena, PhD, Associate Professor, Shared Core Facilities Molecular and Cell Technologies, Dept. of Biochemistry, Prof. V.F. Voino-Yasenetsky Krasnoyarsk State Medical University, Krasnoyarsk, Russian Federation

Salmina Alla, MD, PhD, Professor, Chief Researcher & Head, Laboratory of Experimental Brain Cytology, Division of Brain Sciences, Research Center of Neurology, Moscow, Russia; Chief Researcher, Research Institute of Molecular Medicine & Pathobiochemistry, Prof. V.F. Voino-Yasenetsky Krasnoyarsk State Medical University, Krasnoyarsk, Russian Federation

Shik Olga, MD, PhD, Associate Professor, Dept. of Hygiene, Prof. V.F. Voino-Yasenetsky Krasnoyarsk State Medical University, Krasnoyarsk, Russian Federation

Smolnikova Marina, PhD, Leading Researcher, Laboratory of Cell and Molecular Physiology and Pathology, Research Institute Medical Problems of the North, Krasnoyarsk, Russian Federation

Stepanova Lyudmila, PhD, Professor, Siberian Federal University, Krasnoyarsk, Russian Federation

Tsuji Chiharu, PhD, Department of Basic Research on Social Recognition and Memory, Research Center for Child Mental Development, Kanazawa University, Kanazawa, Japan

Yamamoto Yasuhiko, MD, PhD, Professor, Dept. of Biochemistry and Molecular Vascular Biology, Kanazawa University Graduate School of Medical Sciences, Kanazawa University, Kanazawa, Japan

Yakovleva Natalia, PhD, Associate Professor, The Krasnoyarsk State Pedagogical University named after V.P. Astafiev, Krasnoyarsk, Russian Federation