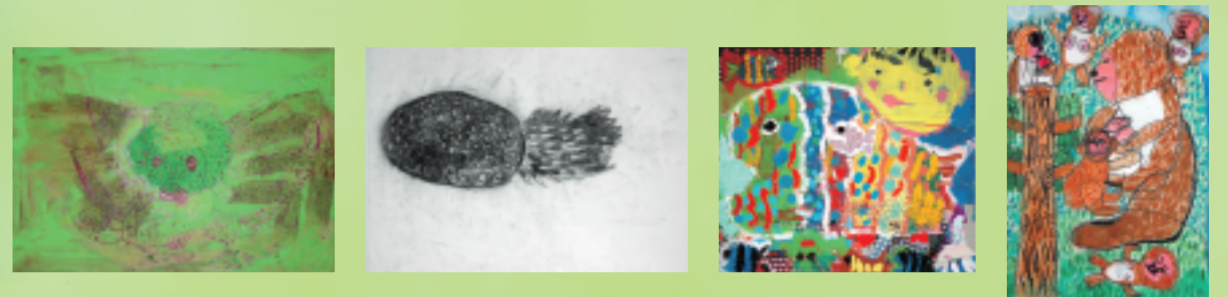


International Conference on Social Brain: Autism and Neuroethics

- Kanazawa University 150th Anniversary Lecture and Symposium, Series 7
- United Graduate School of Child Development Kickoff Symposium



March 24-25, 2010

Juzen Lecture Hall

(金沢大学医学部キャンパス内 十全講堂)

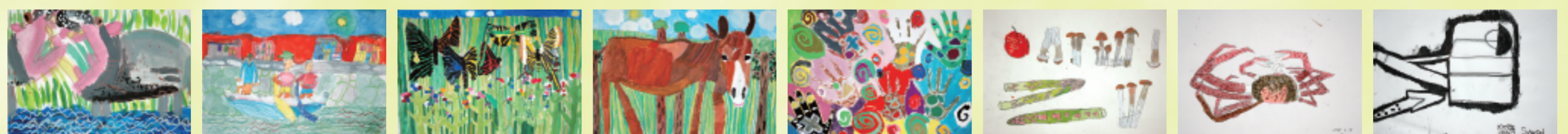


March 24 [Day 1]

Support in Autism		Open Lecture		Osaka University	市民公開	大阪大学担当	市民公開 9:00 ~ 15:20
Time	Speaker	Affiliation	Title				
8:50~ 8:55	Haruhiro Higashida	Kanazawa University, Japan	Opening Remarks (In Japanese)		東田 陽博 開会の辞	(日本語)	
8:55~ 9:00	Shinichi Nakamura	Kanazawa University, Japan	Opening Address (In Japanese)		中村 信一 開会の挨拶	(日本語)	
9:00~ 9:30	Ikuko Mouri	Osaka University, Japan	Brief Introduction on Care (In Japanese)		毛利 育子 発達障害の支援について	(日本語)	
9:30~10:30	Mariko Nakanishi	Division of Child Development, Rehabilitation, and Metabolism The Children's Hospital of Philadelphia	Developmental Disabilities and the Role of Pediatricians (In Japanese)		中西真理子 米国における発達障害支援と小児科医の役割	(日本語)	
10:30~11:30	Shizuko Kameyama Barnes	New York State Certified School Psychologist Putnam/Northern Westchester BOCES	Educational Approaches for Children with Special Needs (In Japanese)		バーンス亀山静子 支援の必要な子供達のための教育方法	(日本語)	
11:30~13:30	Lunch and Tea Time						
Ethics		Open Lecture		Kanazawa University	一部市民公開	金沢大学担当	
13:30~13:50	Masayoshi Shibata	Kanazawa University, Japan	Brief Introduction on Neuroethics (In Japanese)		柴田 正良 脳神経倫理の簡単な紹介	(日本語)	
13:50~15:20	Deborah Barnbaum	Kent State University, USA	Ethics of Autism (In English and Japanese)		デボラ・バンバム 自閉症倫理	(英語通訳)	
15:20~15:40	Coffee Break						
15:40~16:00	Manabu Ooi	Kanazawa University, Japan	Brief Introduction on Clinical linguistics/phonetics				
16:00~17:00	Mick Perkins	The University of Sheffield, UK	Clinical Pragmatics and Social Brain				
17:00~18:00	Sara Howard	The University of Sheffield, UK	Clinical Phonetics/Phonology and Brain Pathology				

March 25 [Day 2]

Brain Imaging and Psychiatric Disorder				Hamamatsu University School of Medicine
Time	Speaker	Affiliation	Title	
9:00~ 9:30	Katuaki Suzuki	Hamamatsu University School of Medicine, Japan	Brief Introduction on Brain Imaging	
9:30~10:30	Alexander Neumeister	Yale University School of Medicine, USA	Molecular PET Imaging Reveals Novel Mechanisms in the Neurobiology of Mood and Anxiety Disorders	
10:30~11:00	Coffee Break			
11:00~12:00	Eadbhard O'Callaghan	Cluain Mhuire Family Centre, Ireland	Practices and Effectiveness in Care Provision of Preventative Early Intervention for the Mentally Ill in Relatively Young Populations	
12:00~13:00	Lunch Time			
Animal Study in Chromosome Rearrangement and Autism				Kanazawa University
13:00~13:20	Shin-ichi Horike	Kanazawa University, Japan	Brief Introduction on Epigenetic Control	
13:20~14:10	John B. Vincent	Centre for Addiction and Mental Health, Canada	Using Genomic Mutations to Find Genes for Autism	
14:10~15:00	Thomas Bourgeron	Institute Pasteur, France	Tackling the Genetic and Synaptic Diversity of Autism Spectrum Disorders	
15:00~15:20	Coffee Break			
15:20~16:10	Janine M. LaSalle	University of California Davis, USA	Autism Epigenetics	
16:10~17:00	Dag H. Yasui	University of California Davis, USA	15q11-13 Chromatin Organization and Autism	
17:00~17:50	Takefumi Kikusui	Azabu University, Japan	Mouse Social Brain and Behavior: Influences of Developmental Period	
17:50~18:00	Yoshio Minabe	Kanazawa University, Japan	Closing Remarks	



Kanazawa University

Research Center for Child Mental Development

(大阪大学大学院大阪大学・金沢大学・浜松医科大学)
 連合小児発達学研究所 金沢校
 (金沢大学子どものこころの発達研究センター)